

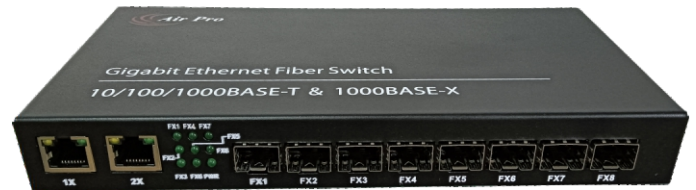
Fiber Switch has 8 Ports 1000M SFP Slots and 2 Ports 10/100/1000M Negotiable RJ45 ports.

PRODUCT OVERVIEW

AP-SX8820 Users can choose various SFP according to the requirement, e.g. Multimode/single mode, dual fiber/single fiber, single mode 20~100km. It can achieve seamless connection for fiber and Ethernet 10M,100M,1000M, more convenient than normal gigabit fiber switch and suitable for small fiber Ethernet projects and others with special requirements.

8SFP+2RJ45 Fiber switch has 2 RJ45 twisted-pair port and 8 SFP slots, RJ45 port can be self-adaptive, can be full duplex and half duplex mode, for SFP slots, users can insert SFP module and Copper RJ45 module. The fiber switch has reliable and stable performance.

The SFP slots of the fiber switch can only be 1000M full duplex mode, but for RJ45, it can work on 10M,100M or 1000M, full duplex or half duplex. For SFP modules, there are multimode and single mode, single mode has dual fiber and single fiber kinds, dual fiber SFP needs to use duplex fiber cable to transmit 1 channel Ethernet signal, while single fiber one can only use simplex fiber cable.



MAIN FEATURES

- 8 SFP slots and 2 RJ45 port (optional).
- Rj45 port can be negotiable on 10/100/1000M, full/half duplex mode, parallel line/crossing line connections.
- SFP ports support 1000M full duplex mode.
- Support flow control, prevent broadcast storm.
- Support 4K VLAN IDs, Level III QoS, TPv4, Tpv6.
- Support Trunking.
- Support Max 1632 bytes data packet.

Specifications:

- Standard: IEEE802.3/u/z/ab, 10Base-T, 100Base-TX,1000Base-T and 1000Base-X.
- MAC address: 8K(auto updating).
- Frame Memory: 1MkB shared.
- Bandwidth: 20G, realize speed forwarding without blocking.
- Connectors: RJ45 port - 10/100/1000Mbps (Self-adaptive) SFP port 1000Mbps.
- Cable: twisted-pair cable Cat5e or Cat6 (can be reach 100meter).
- Multimode fiber: 50/125,62.5/125 μ m (reach 550/224meter).
- Single mode fiber: 8/125,8.7/125,9/125 μ m (reach 10~100km).
- Flow control: full duplex IEEE802.3x; half duplex back pressure.
- LED indicator: PWR,100,1000, SFP1, SFP2, SFP3, SFP4, SFP5, SFP6, SFP7, SFP8.
- Power: AC220V(100-240V),50 60Hz; DC 5V2A.
- Environment temperature: 0~50 .
- Storage temperature: -40~70 .
- Humidity: 5%~90%.
- Dimension: 200*126*30mm.



www.airpronetworks.com