

# AIR-1200Mbps Dual Band Wall Mount Wireless AP

Boost your wireless signal and enjoy ultimate coverage

## PRODUCT OVERVIEW

AIR-WAP1200 is an 11ac dual band wall mount style wireless access point upgrade to the latest wireless-AC technology, fast data rate (900Mbps in 5G and 300Mbps in 2.4GHz) and dual band allowing content to download faster, large video or music files to sync more quickly and stream seamlessly. Embed PoE, work in hotel, school, hospital mainly for a stable wireless networking. Then work with AirPro Access Controller System, easy in central configuration, meet with different advertisement and multi authentication requirement, professional and cost effectively in large area Wi-Fi solution.

## KEY FEATURES AND HIGHLIGHTS

### Wireless AC Technology, more users:-

The AIR-WAP1200 AC dual band wall mount Wireless Access Point with PoE WAN port, offers AC technology 1200Mbps data rate for seamless/smooth video and music streaming. More users including computers, Internet-ready TVs, game consoles, and other Wi-Fi devices can access into this wireless networking.

### Dual Band, 5G Priority, Less Interference:-

Double your network bandwidth with Dual-Band AC (2.4G and 5G) and 5G priority, designed to help avoid interference and maximize throughput. You can browse web pages, handle mails and chat over 2.4G while enjoying large-free HD multimedia and online gaming over 5G without worrying about interference.

### Power over Ethernet:-

AIR-WAP1200 AC AP has integrated IEEE 802.3af standard Power over Ethernet (PoE), for easy installation and lower cost. So it can be installed in areas where power outlets are not readily available, eliminating the mess of altering existing network infrastructure.



### Adjustable RF Power:-

The transmission RF power is adjustable based on environment. Cut down RF power in place with high density of people or wireless AP to reduce Wi-Fi interference; Then Increase RF power in large area to improve the signal strength.

### Build in Wi-Fi Channel Analysis Tool for best channel:-

Build in Smart Channel Analysis Tool, help to select the less Wi-Fi Interference channels, ensure the stability wireless signal.

### Wi-Fi Timed Off:-

Easy to control the Wi-Fi signal on/off by firmware GUI interface in fixed time or press the Wi-Fi button on the case at any time, to save the running energy and cost.

### Access Controller System:-

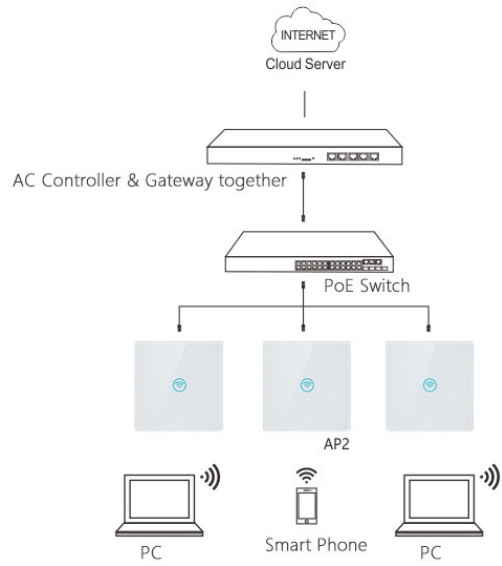
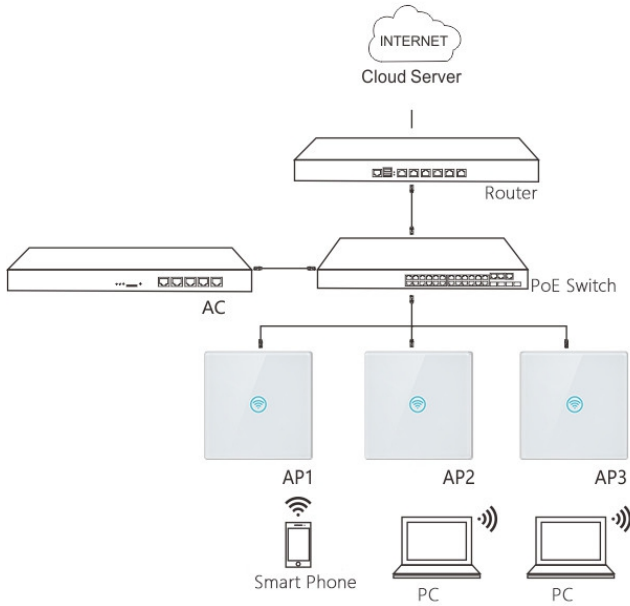
With Access Control System, easily access advanced network settings through PC, like AP status monitor, change IP address, ESSID, Channel, Password, upgrade firmware, backup and restore....

## PRODUCT SPECIFICATIONS

### Hardware Specifications

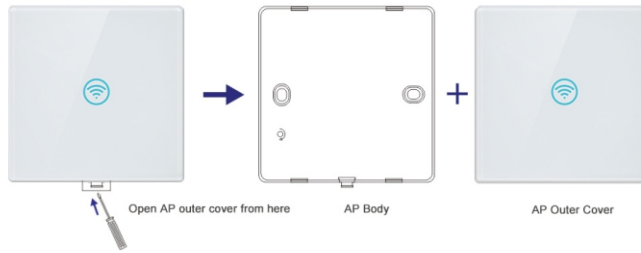
<b>Item</b>	<b>AIR-WAP1200</b>				
Interface	1 * PoE WAN Port / 1*LAN Port				
Button	Wi-Fi + Reset Button, press 1seconds to disable Wi-Fi off press 15 seconds to revert to default data.				
External Power Supply	48V PoE, IEEE 802.3af standard				
Dimensions (W X D X H)	86*86*35mm				
Antenna Type	Build in dual band 3dBi antenna				
<b>WIRELESS FEATURES</b>					
Wireless Standards	IEEE 802.11ac/n/a 5GHz; IEEE 802.11n/g/b 2.4GHz				
Frequency	5GHz and 2.4GHz				
Signal Rate	5GHz:Up to 900Mbps; 2.4GHz: Up to 300Mbps				
EIRP	<20dBm(EIRP)				
RF Power (2.4GHz)	802.11b	11M	17±2dBm	1M	20±2dBm
	802.11g	54M	16±2dBm	6M	19±2dBm
	802.11n HT20	MCS7	15±2dBm	MCS0	18±2dBm
	802.11n HT40	MCS7	14±2dBm	MCS0	17±2dBm
RF Power (5GHz)	802.11a	54M	13±2dBm	6M	16±2dBm
	802.11n HT20	MCS7	12±2dBm	MCS0	15±2dBm
	802.11n HT40	MCS7	11±2dBm	MCS0	14±2dBm
	802.11ac HT80	MCS9	10±2dBm	MCS0	13±2dBm
Receive Sensitivity (2.4GHz)	802.11b	11M	-85dBm	1M	-94dBm
	802.11g	54M	-72dBm	6M	-90dBm
	802.11n HT20	MCS7	-70dBm	MCS0	-88dBm
	802.11n HT40	MCS7	-68dBm	MCS0	-86dBm
Receive Sensitivity (5GHz)	802.11a	54M	-74dBm	6M	-90dBm
	802.11n HT20	MCS7	-72dBm	MCS0	-88dBm
	802.11n HT40	MCS7	-68dBm	MCS0	-85dBm
	802.11ac HT80	MCS9	-58dBm	MCS0	-80dBm
Wireless	Auto-Channel selection Distance Control (802.1x Ack timeout) Multiple SSID (4 SSID for 2.4G, 4 SSID for 5.8G) BSSID				
EVM	2.4G: 802.11b: ≤-10 dB; 802.11g: ≤-25dB; 802.11n: ≤-28 dB 5G: 802.11a: ≤-25 dB; 802.11n: ≤-28 dB; 802.11ac: ≤-32 dB				
PPM	±20ppm				
Max Access Users	80				
Operation Mode	Wireless AP, Gateway, Wi-Fi Repeater				
Wireless Security	64/128-bit WEP, WPA / WPA2, WPA-PSK/ WPA2-PSK encryption				
LED Status	Wi-Fi				
<b>MANAGEMENT</b>					
System Settings	Web-based configuration (HTTP/Telnet), Access Control System (SNMP)				
Firmware Upgrade	Upgrade firmware via web browser or TFTP				
Administration	Admin Password can be configured				
System monitoring	Watch dog, Status in hand , useful statistic and Event log				
Logs	Supports local logs, logs host, logs file export				
Reset	Reset or factory defaults				
Backup	Restore settings & configuration of the device to local file, Scheduled reboot				
<b>OTHERS</b>					
Certification	CE, RoSH				
Package Contents	1200Mbps Dual Band wireless access point Setting Accessory				
System Requirements	Microsoft Windows 98SE, NT, 2000, XP, Vista™ or Windows 7, Windows 8, Windows 10, MAC OS, NetWare, UNIX or Linux				
Environment	Operating Temperature: -40~55 °C Storage Temperature: -40~70 °C Humidity: 5%~95% non-condensing				

## WORKING DIAGRAM

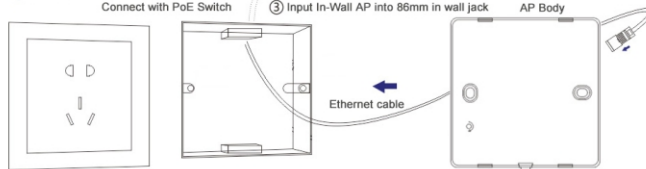


## HOW TO SETUP

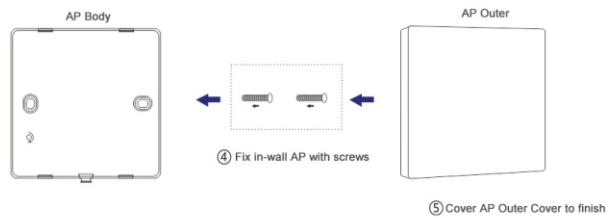
### Step 1: Move AP outer cover with screwdriver



### Step 2: Setup In-Wall AP



- ① Open the case of 86mm in wall jack
- ② Connect LAN cable with WAN Port on In-Wall AP



[www.airpro.in](http://www.airpro.in)